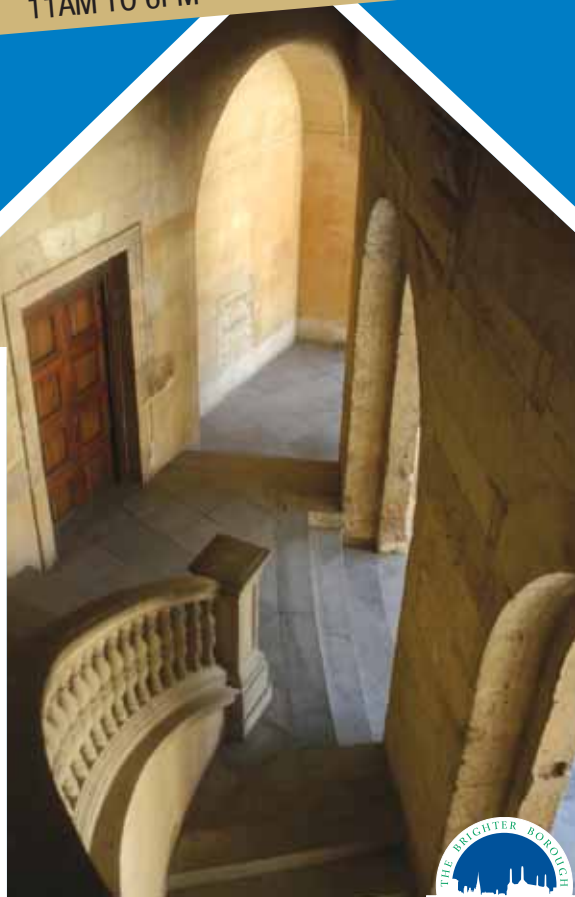


Wandsworth ARTISTS' OPEN HOUSE Weekends 2008

SATURDAY 27 - SUNDAY 28 SEPTEMBER

SATURDAY 4 - SUNDAY 5 OCTOBER

11AM TO 6PM



Wandsworth ARTISTS' OPEN HOUSE Weekends 2008

Saturday 27th – Sunday 28th September
Saturday 4th – Sunday 5th October
11am to 6pm each day

This year we have around 200 artists showing and selling artworks at 93 places across the borough. Visitors can expect to find a variety of works, from ceramics and jewellery, to paintings, prints and sculptures.

Not all the places are open on both weekends. Please check the ★ on each listing which indicates when studios are open.

★ **Only open the first weekend**

★★ **Open both weekends**

Local cafes are included in the listings so that you can pace your visits with refreshment stops. Some of them are showing art works and details of framers are also provided. At the back you will find a map to make it easy to see where venues are located.

Throughout September and October you can win fabulous prizes and read exclusive interviews with artists and crafts people from Wandsworth Artists' Open House in SW and rise magazines.

You can also find further information on the event, as well as an enlarged map of the venues, at the SW and rise magazines websites.

www.southwestmag.co.uk

www.risemagazine.co.uk

Artists' Open House is organised by the Arts Service of Wandsworth Council.

(020) 8871 8711

arts@wandsworth.gov.uk

With thanks to St George South London Ltd and Tara Studio.



Front cover image: Bruce St. Julian-Bown (studio 41)

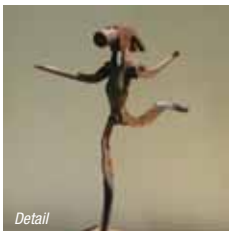
sw rise



**1. Clare Douglas, John Douglas,
Ailsa Garlick, Vivien Benton**

*** 27 Penwode House,
Tunworth Crescent, SW15

A magical mix of appliquéd and embroidered textiles, monochrome and colour photographs, silk paintings and scarves, together with mixed media artworks.



**2. Gilbert Whyman, Corinna Button,
Bruce Purchase, Stephen Cooper**

*** 17 Rodway Road, SW15

Sculptures of welded steel and clay, textured paintings and prints, metal leaf collages, and pictures full of New Zealand light.

gilbertwhyman@hotmail.co.uk

(020) 8789 3471



3. Alan Smart

*** 21 Huntingfield Road, SW15

Oil and watercolour paintings ranging from still life to semi abstract.

chrominska@fsmail.net • (020) 8878 5083



4. Elizabeth MacDonnell

*** 17 Malbrook Road, SW15

Come and see the world through my eyes – paintings that offer a feast of colour and energy.

(020) 8788 9462



5. Ann Hawksley

*** 50 Coalecroft Road, SW15

Beautifully observed paintings of everyday scenes from station concourses and wet London streets, to skiers, beaches and crabbing.

www.annhawksley.co.uk • (020) 8785 7781



6. Sally Scott, Neal French

*** The Cottage, Cambalt Road, SW15

Figurative paintings and sculptures in the studio and garden. Sally – colourful landscapes, still lifes and prints. Neal – clay and bronze sculptures from small scale to life-size.

www.sallyscottartist.co.uk

www.nealfrench.co.uk



7. Charles Penny

*** 70 Erpingham Road, SW15

Paintings, prints and cards.

Charles.penny@gmail.com

(020) 8789 9824



8. Sheila Godwin

*** 32 Landford Road, SW15

Country, coastal and architectural paintings, including oil and watercolour works of Putney and London's waterways.

(020) 8788 6127



9. Jane Theophilus

*** 9 Clarendon Drive, SW15

Beautiful hand-built and wheel-made pottery for everyday use.

(020) 8789 3144



10. Ben Pickford

*** 90 Hotham Road, SW15

Recent furniture prototypes made in wood, metal and plastics, together with a series of new screenprints and mixed media monoprints.

(020) 8789 2953



11. Ken Cox, Margot Cox

*** 23 Danemere Street, SW15

Figures in movement and landscapes are rendered with an expressive fluency of brush and line. Drawings, paintings and prints from Ken reveal the wealth of his experience as a professional illustrator for major publications.

www.kencox.co.uk • (020) 8788 0786

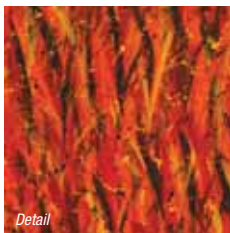


12. Jo Bowen

*** London Rowing Club, Embankment, SW15

Scenes of Putney and the Thames in oil, charcoal and pencil on show in this unusual riverside location. Also limited edition prints of cricket, sailing and Cornwall.

www.jobowen.co.uk



13. Tania Stapp, Paul Scully

*** Platt Centre, Felsham Road, SW15
Uplifting canvases of vibrant abstracts inspired by the sights and experiences of Tania's travels. Photographs that reveal Paul's personal take on the world around us. Commissions taken.
www.taniastapp.co.uk • 07932 672 278



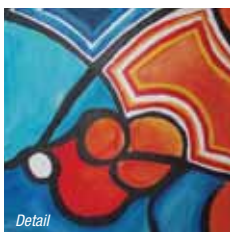
14. Julianna Franchetti, Mary Walker

*** 54 Lacy Road, SW15
Oil paintings, watercolours and etchings of the Thames and seascape prints from Julianna. Portrait commissions also taken. A wonderful collection of unique semi-precious stone and pearl jewellery from Mary.
www.juliannafranchetti.co.uk



15. Margaret Knott, Jenny Alexander, Rona B

*** 56 Lacy Road, SW15
Paintings and etchings from Margaret. Knitted silky, textured scarves in a spectrum of colours from Jenny. Handcrafted jewellery in silver and semi-precious stones from Rona.
(020) 8789 3030



16. Ros Vestey

*** 2a Modder Place, SW15
Figurative sculptures, abstract paintings and drawings.
rosvestey@aol.com • 07783 431 840



17. Gurley, Jayson Lilley, Tom Doran, Andrew Fyvie

*** 1 Charlwood Road, SW15
Paintings and sculpture to see, fairy cakes to eat.
www.thegurley.co.uk • www.jaysonlilley.co.uk
www.thomasdoran.webeden.co.uk



18. Helen Fickling, Andrew Fickling, Diane Tims, Beth Wintgens, Dennis Keeling

*** 14 Stratford Grove, SW15
An engaging mix of original fine art photography, sculpture, jewellery, wooden turned objects, abstract and landscape paintings.
www.helenfickling.com • 07976 946 536



19. Sandra Roche, Keith Gretton, Jocelyn Peachey, Isobel Peachey

*** 22 Norroy Road, SW15
Bold, colourful images inspired by the Tuscan sun. Figurative ceramic sculptures, nude studies and striking portraits. Landscapes inspired by films... and much more.
(020) 8785 9780



20. Sasha Bowles, Joan Hickson, Jaqui Huber

*** 221b Upper Richmond Road, SW15
Evocative paintings based on everyday narratives. Original illustrations for children's books, including *Postman Pat* and *Rosie and Jim*, from Joan.
www.sashabowles.co.uk • 07905 149 657



21. Virginia Bliss, James Morton-Evans, Clara Morton-Evans

*** 41 Werter Road, SW15
Decorative and domestic ceramics, engraved images and lettering on glass, stained glass panels, mosaic mirrors with a difference and hand-made, sculptural furniture.
(020) 8788 3773



22. Allan Manham

* The Studio, 35 Oxford Road, SW15
Traditional handbuilt pots from a mixture of porcelain and stoneware clays, some with colourful oxides and stains. Also dramatic smoke fired pots. Sizes from 10cm to 55cm high.
www.manham.net • (020) 8780 3372



23. Sim Hock Neoh

*** 64 Schubert Road, SW15
A large collection of vibrant paintings depicting local and country scenes in oil and watercolour. Commissions taken for portraits, buildings or special locations.
simhockneoh@hotmail.com
(020) 8874 5158



24. Susan Kate Torcy

* 2 Oakhill Place, SW15
A variety of landscape and abstract paintings and drawings in watercolour, acrylic and mixed media – all at reasonable prices.
suetorcy@hotmail.com



25. Jennifer Hollingdale

*** 20 Jephtha Road, SW18

Screenprints and stitched textiles – including quilts, cushions and framed pieces – some using vintage fabrics, memorabilia and found objects.

hollingdale12@btinternet.com

(020) 8874 6314



26. Julia Durrant, Matthew Foster, Anna Seaborn

*** 53 Granville Road, SW18

Porcelain wall pieces, ceramic vessels, still-life and landscapes in acrylic, water-colour and mixed-media. Stone carvings and sculptures in the garden.

(020) 8874 3676



27. Cliff Pearcey

*** 1 Granville Road, SW18

Wall pieces, small pieces and tall pieces – all made from found objects. Familiar shapes given a new lease of life. Perceptive, witty and clever.

(020) 8870 6402



28. Rajmohani Mundle

* 250 Merton Road, SW18

Narrative paintings and drawings in mixed media that recollect memories old and new.

07957 486 725 • mundwillz@ntlworld.com



29. Olga Brown, Stuart Brown

*** 19 Smeaton Road, SW18

Olga's impressionistic oil paintings capture mood, light and atmosphere of the London we all love. Stuart takes photographs that reveal a challenging interplay of light and shape.

www.olgabrown-art.com

www.stuartbrownphotography.com



A Tad's Café

3 Standen Road, SW18

7am-4pm Monday to Saturday,

9am-4pm Sunday.

Friendly family run café offering the best in British and Polish cuisine.

(020) 8871 2548



30. Tony Gant, Janet Gant

*** 53 Southdean Gardens, SW19

An Edwardian family house and working pottery producing mugs, jugs, bowls, dishes, plates and Green Man vases.

(020) 8789 4518



31. Halina Nekanda-Trepka, Andrzej Borkowski

*** 62 Southdean Gardens, SW19

Etchings, collagraphs, drawings and paintings on glass featuring landscapes, abstracts, fables and legends.

Halina.nekandatrepka@gmail.com

(020) 8788 8739



32. Piola Massarotto

* The Old Sweet Shop, 11 Brookwood Road, SW18

Come and explore beading as a craft form and buy funky bead necklaces.

www.theoldsweetshopweb.com

(020) 8871 2272



33. Katharine Rowe

* 113 Trentham Street, SW18

Fantastical collages offering an exotic view of the everyday. Scenes of well-known places are transformed with tropical animals and plants.

www.katharinerowe.com



34. Anthony Simkins

* 93 Trentham Street, SW18

Portraits, travel scenes and life studies in oil, pastel and pencil.

(020) 8870 5963



35 Jo Gibson, Paulene Cattle, Lucy Gibson, Kay Whiteman

* 117 Astonville Street, SW18

Something for everyone in this diverse selection of works – jewellery, pen and watercolour cartoons, prints, textiles and unusual garden ceramics.

Jojo.gibson@hotmail.co.uk • (020) 8874 7790



36. Lumina Dyer, Christopher Burke, Sharon Howard

*** Tara Studio, 356 Garratt Lane, SW18
Pictures of the real, surreal and abstract – using collage, oil and acrylic to express the various visions and viewpoints of this mixed group.



37. Jane East, Lucy Tennyson, Sanya Barakova, Judith Rowan

*** 25 Lydden Grove, SW18
Four women photographers with a glamorous and unconventional approach to stills, film and photomontage – showing imaginative, gritty and beautiful images of landscapes and people.
www.janeeast.com



38. Jan Shand

*** 14 Swaffield Road, SW18
Paintings about landscape and the memory of being in it, that are as much about weather and season as the place depicted. One place can be the source of many paintings.



39. Steve Lyne, June Lyne

*** 59 Earlsfield Road, SW18
Original photographs as seen in major national publications, and including rare shots of Young's Ram Brewery. Handmade silver jewellery at affordable prices.
www.lyne.co.uk • (020) 8871 2519



40. Honor Brogan, Bridget Boulting

*** 12 Westover Road, SW18
Figurative and landscape drawings and paintings – including pieces based on work with Glyndebourne Festival Opera 2008.



41. Bruce St Julian-Bown, Eileen O'Connor

*** 39c Heathfield Road, SW18
Evocative photographs taken at home and abroad by Bruce alongside Eileen's paintings of people and places.



42. Matthew Mounsey

*** 16 Whitecliff House, Vermont Road, SW18
Dream On... Paintings and drawings in acrylic, ink and mixed media.
07941 355 450



43. Joanna Veevers

* 38 Cicada Road, SW18
One-off ceramic tiles, mosaic panels, mirrors, porcelain jewellery, drawings and prints from an established professional.
www.joveevers.dsl.pipex.com
(020) 8874 9633



44. Diane Whyte, Lynette Cahill, Mike Rice, James Bacchi Androli

*** 49 Wandsworth Common West Side, SW18
Paintings and watercolours that reveal the different responses of each artist to the natural environment, landscapes, seascapes and travels abroad.



45. Phillippa Egerton, Sally Codrington, David King, Jenny Mayfield

*** 38 Acris Street, SW18
A dynamic range of paintings, screenprints, woodcuts and linocuts of local, coastal and African scenes alongside delicate animal and bird ceramic sculptures.
(020) 8870 9947



46. Simon Lawson, Ann Hobson

*** 8 Huguenot Place, SW18
Industrial landscape inspired etchings in the British academic tradition from Simon. Bold and dynamic figure based narrative work from Ann.
www.simonlawsonprints.com



B Ace Fusion 110 St John's Hill, SW11
12-11pm Monday to Thursday,
12-11.30pm Friday, 10am-11.30pm Saturday,
10am-10pm Sunday.
Delicious African, Caribbean and English cuisine.
Previewing Cynthia Pickard, (studio 47).
www.acefusion.co.uk • (020) 7228 5584



47. Cynthia Pickard

*** 9c Louvaine Road, SW11

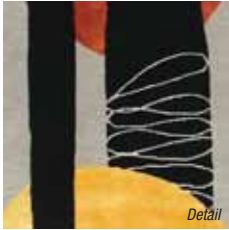
Creative photographic images, paintings and prints inspired by exotic travel destinations.
Cynthia.p1@ukonline.co.uk
07973 360 575



48. Louise Steidl, Nick Steidl

*** 37 Baskerville Road, SW18

Photographs from recent travels, including South Africa, taken by Nick alongside exquisitely detailed botanical watercolours from Louise.
nick@pigeonpost.com
louise@pigeonpost.com



49. Diana Wackerbarth, Jo Sumner, Carol Stubbington, Doxa Sivropoulos, Sara Mark, Harriet Fredman, Kate Birss

*** 34 Lyford Road, SW18

New faces and old favourites – a lively mix of paintings, prints, photography, ceramics, jewellery and textiles. Lovely surroundings and a warm welcome.
di_m_w@yahoo.co.uk • 07711 349 586



50. Maureen Sweeney

*** 13 Burntwood Grange Road, SW18

Gritty cityscapes of London and evocative landscapes in paint and print. Print sale.
Mosweeney2003@yahoo.co.uk
(020) 8874 4202



51. Hermione Carline, Phil Dobson, Madeleine Hunter, Andrea Ellis

*** 44 Brodrick Road, SW17

A diverse selection of new works informed by aspects of modern life on aluminium, wood, canvas, and layered silkscreens inspired by early Japanese photography.
www.art-atelier.co.uk



52. The Carline Art Group

*** 14b Bellevue Road, SW17

Landscapes, market scenes, portraits and still-life paintings and drawings from a group of twelve artists working in a variety of styles and media.
Math1eson@aol.com



53. Julie Higgins, Elizabeth Spiro

*** 18a Bellevue Road, SW17

A variety of landscape, still-life and abstract work in paintings, etchings and enamel, including enamel jewellery and dishes.
No wheelchair access.
www.jharts.talktalk.net
(020) 8767 2596



54. Adam Tudor

*** 34 Beechcroft Road, SW17

Paintings and works on paper that suggest marine dramas past and present.
tapartproject@yahoo.co.uk
07958 211839



55. Valerie Taylor, Christopher Browne, Ann Funston, Jane Smith, Sally Dunnett

*** 35 Fishponds Road SW17

A treasure trove of contemporary stained glass, fused glass, esoteric ceramics – stoneware with a twinkle in the eye, paintings, drawings, prints and photographs. Stained glass commissions taken.
www.vt-artworks.co.uk



56. Ken McCalla

*** 13 Letchworth Street, SW17

Sculptures, paintings, prints and cards at affordable prices. Everyone welcome to have a look and relax with a drink and homemade cake. Artist presentation at 11.30am each day.
www.yahwarts.co.uk



57. David Hicks

*** 156 Eswyn Road, SW17

Paintings that exude colour and vibrancy yet have a contemplative feel. Influenced by artists like Hodgkin, this work searches for the emotive essence of abstraction.
www.davidhicksart.com • (020) 8767 8473



58. Tom Butler, Lucinda Denning

*** 14 Spalding Road, SW17

Lucinda's richly coloured and decorative portraits and figurative works use oil gouache and mosaics. Tom paints nocturnal urban landscapes, both figurative and abstracted, in oil and acrylic.



59. Paul Rucki, Sabira Iqbal

*** 111 Salterford Road, SW17
Geometric art influenced by Islamic design alongside figurative drawings and prints.
paulrucki@fsmail.net



60. Malcolm Franklin

*** 4 Credenhill Street, SW16
Abstract sculpture in marble, stone and wood alongside prints and drawings. A range of sizes and prices.



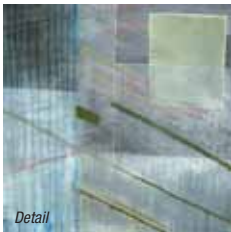
61. Amelia Critchlow, Alice Brewer, Stephanie Wilkinson, Kate Chillcott

*** 22 Besley Street, SW16
Stories, personal feelings and private spaces are subject matter for a range of paintings, drawings, stitched and collaged textile works, prints and cards. www.stephaniewilkinson.co.uk
Amelia 07970 369 517



62. David Pearce, Rosie Robinson, Stephen Stockbridge, Olly Shaw

*** The Mews, 63a Westcote Road, SW16
Come and explore this creative corner packed with sculpture, illustration, painting, screenprints, ceramics, customised and vintage clothing and much more. www.westcotestudios.co.uk



63. Marion Jones, Chris Lessware

*** 84 Ribblesdale Road, SW16
Marion's large paintings develop around form and structure, and Chris' acrylic abstracts are more colour based.
Saatchi online (020) 8769 0520
07985 151 455



64. Imogen Bellwood-Howard

*** 13 Parklands Road, SW16
Oil paintings, drawings and cut-out with urban and environmental degradation themes. Recent work focuses on London.
immybell81@yahoo.co.uk



65. Adam Dabrowski

*** 89 Moring Road, SW17
Large scale oil paintings that are based directly on the artists' visions and dreams. Portrait commissions taken.
www.adamdabrowskiart.com
(020) 8767 3627 • 07843 672 677



66. Nicola Troll

*** 32 Stapleton Road, SW17
Etchings and aquatints of dramatic landscapes and natural abstracts that capture the mood, light and textures of a moment. Learn about printmaking techniques.



67. Sue Rowling

*** 96 Drakefield Road, SW17
Richly coloured landscape paintings and abstract monoprints alongside a new range of hand-crafted lambswool cushions in stunning colour combinations.
www.suerowling.com • (020) 8672 6910



68. Clive Lavagna

*** 101 Drakefield Road, SW17
Come and enjoy colourful Venice and Morocco. The paintings are collages and gesso with translucent glazes. The prints etching, aquatint, linocut and lithography.
www.clivelavagna.com • (020) 8767 0572



69. Catherine Marche

*** 27 Foxbourne Road, SW17
A wonderful array of drawings, paintings and chic jewellery – hand-crafted with precious metals, gemstones and pearls.
www.catherinemarche.com • 07941 893 072
www.bijoux.catherinemarche.com



C Bertie and Boo

162 Balham High Road, SW12
7.30am-6pm Monday,
7.30am-8pm Tuesday to Friday,
9am-8pm Saturday, 9am-6pm Sunday.
Friendly coffee shop full of character, showcasing work by Gill Stockbridge.
web@bertieandboo.com • (020) 8772 9987

**70. Sheila Morley, Thomas Morley******* 211 Bedford Hill, SW12**

Sheila explores the way weather transforms sea and land in her paintings. Thomas's large bar scenes explore social tension and interaction.
Sheilaw.morley@virgin.net • (020) 8673 0592

**71. Ilana Richardson******* The Coach House, 175 Ramsden Road, SW12**

The intense light and heat of the Mediterranean region are captured beautifully in paintings which draw the viewer in to scenes from Greece, Italy and France.
www.ilana-richardson.com • (020) 8673 3111

**72. Stephen David******* 16 Linnet Mews, SW12**

Landscape paintings inspired by wild and mysterious places, using a variety of media and approaches.
swdavid51@btinternet.com (020) 8675 5673

**73. Charlotte Squire, Matthew Meadows******* Francis Hair Fashions Gallery, 87 Nightingale Lane, SW12**

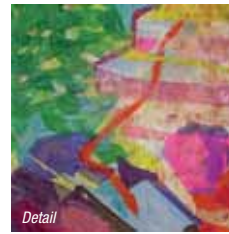
Notions of ideal home are explored in an installation created from reassembled furniture and handprinted wallpaper pieces.
www.francishairfashionsgallery.com (020) 8673 6182

**74. Jenny Richards, Sue Littledale******* 6 Dulka Road, SW11**

Garden sculpture, rustic stoneware, porcelain jewellery, bowls, ancestral vessels and heads.
Jenny-richards@sky.com

**D Crumpet****66 Northcote Road, SW11
8.30am-6pm Monday to Saturday,
9.30am-6pm Sunday.**

A popular child-friendly tearoom, previewing Isobel Hutton, Tess Barnes and Karen Keogh (studios 75, 76 and 77).
www.crumpet.biz • (020) 7924 1117

**75. Isobel Hutton******* 46a Bramfield Road, SW11**

Figurative and landscape work in oils and acrylic, plus a selection of etchings and prints.

**76. Tess Barnes******* 86 Muncaster Road, SW11**

Beautifully drawn portraits with exceptional likenesses. Atmospheric landscapes of England and France in oil, pastel, charcoal and pencil. Portrait commissions taken.
www.tessbarnes.com • (020) 7924 4279

**77. Karen Keogh******* 122 Clapham Common West Side, SW4**

Vibrant etchings and monotypes of landscapes inspired by travels in France, Canada and Sri Lanka as well as London bridges and local scenes.
www.karen-keogh.co.uk • (020) 7228 9662

**E Coffee 1st and Gallery****53 Battersea Rise, SW11
9am-6pm Monday to Sunday.**

Café and gallery for paintings by Daniel Lee – including portraits, landscapes and local scenes. Also offering free wi-fi and a sunny courtyard.
(020) 7585 3046

**78. Sally Loughridge******* 32 Tregarvon Road, SW11**

Studies of dance and movement through space in mixed media paintings, drawings and prints.
s.loughridge@btinternet.com

**79. Philippa Stjernswärd***** 181b Lavender Hill, SW11**

Abstract oil paintings about landscape and still life. *www.philippastjernsward.com (020) 7228 6123*



80. Martin Ireland, Robert Taylor, Anne Hickmott, Joyce Arul

*** 1 Brassey Square, SW11

Bright watercolours by Martin, sensual photographs by Robert, reflective etchings and linocuts by Anne and ceramics by Joyce – exhibiting together in a stunning converted shop.

www.martinireland.co.uk • (020) 7738 0639



81. Rosemarie Gwilliam

*** 85 Grayshott Road, SW11. Entrance via green side door on Kingsley Street.

Landscapes, portraits, life-drawings, still-life and theatre designs – mostly using pastels and natural chalks, with some mixed media, watercolours and oil paintings.



82. Marion McLaren

*** 1 Dunston Road, SW11

Strikingly colourful big wall banners and smaller framed works shot through with bold symbols and text. Rescued throw-away packaging is inspiration and raw material.

www.marionmclaren.spaces.live.com



83. Sonja Fairfield, Malcolm Menlove, Jonet Harley-Peters, Margaret Carty

*** Turpin House Clubroom, Strasburg Road, SW11

Internal and external experiences are explored with a variety of outcomes in clay, print, pigment and watercolour.



84. Jayson Singh

*** 6 Parkgate Road, SW11

Paintings based on memories of childhood experiences and places.

Jayson_singh@yahoo.co.uk



85. Tim Slade

*** 2 Wayford Street, SW11

Line and wash illustrated maps from twenty years as an illustrator. Watercolour and pastel drawing figure work. Portrait commissions undertaken.

humblescribbler@btinternet.com



86. Michael John Warren

*** Baltimore House, Battersea Reach, SW18

Beautifully observed paintings of London including The City of London, views from the South Bank and London Parks. Former artist in residence at Battersea Power Station.

www.myspace.com/michaelwarrenartist.



G Cake Boy

Kingfisher House, Battersea Reach, SW18

8am-7pm Monday to Friday,

9am-6pm Saturday.

Divine cake and coffee boutique of master pastry chef Eric Lanford.

www.cake-boy.com • (020) 7978 5555

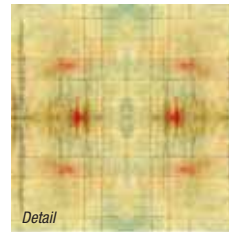


87. Ofelia Diaz

*** Baltimore House, Battersea Reach, SW18

Familiar forms of hats and shoes are re-created using paper-mache and a delightful sense of humour.

www.ofeliadiaz.com



88. Group Show

*** Commodore House, Battersea Reach, SW18

Work by recent graduates of Wimbledon School of Art that promises to take you on an expedition to the farside of the human condition and back before teatime.

kerry@remotecontrol.biz



F Gazette

79 Riverside Plaza, Chatfield Road, SW11

8am-11pm every day

A haven of hospitality for breakfast, business lunches, a chilled-out glass of wine or romantic night out.

www.gazettebrasserie.co.uk • (020) 7223 0999




Putney School of Art and Design

*** Oxford Road, SW15

Showing work from the Drawing and Painting courses run by tutor Ian Ellis, and a chance to sample some of the courses on offer at the school, subject to availability.

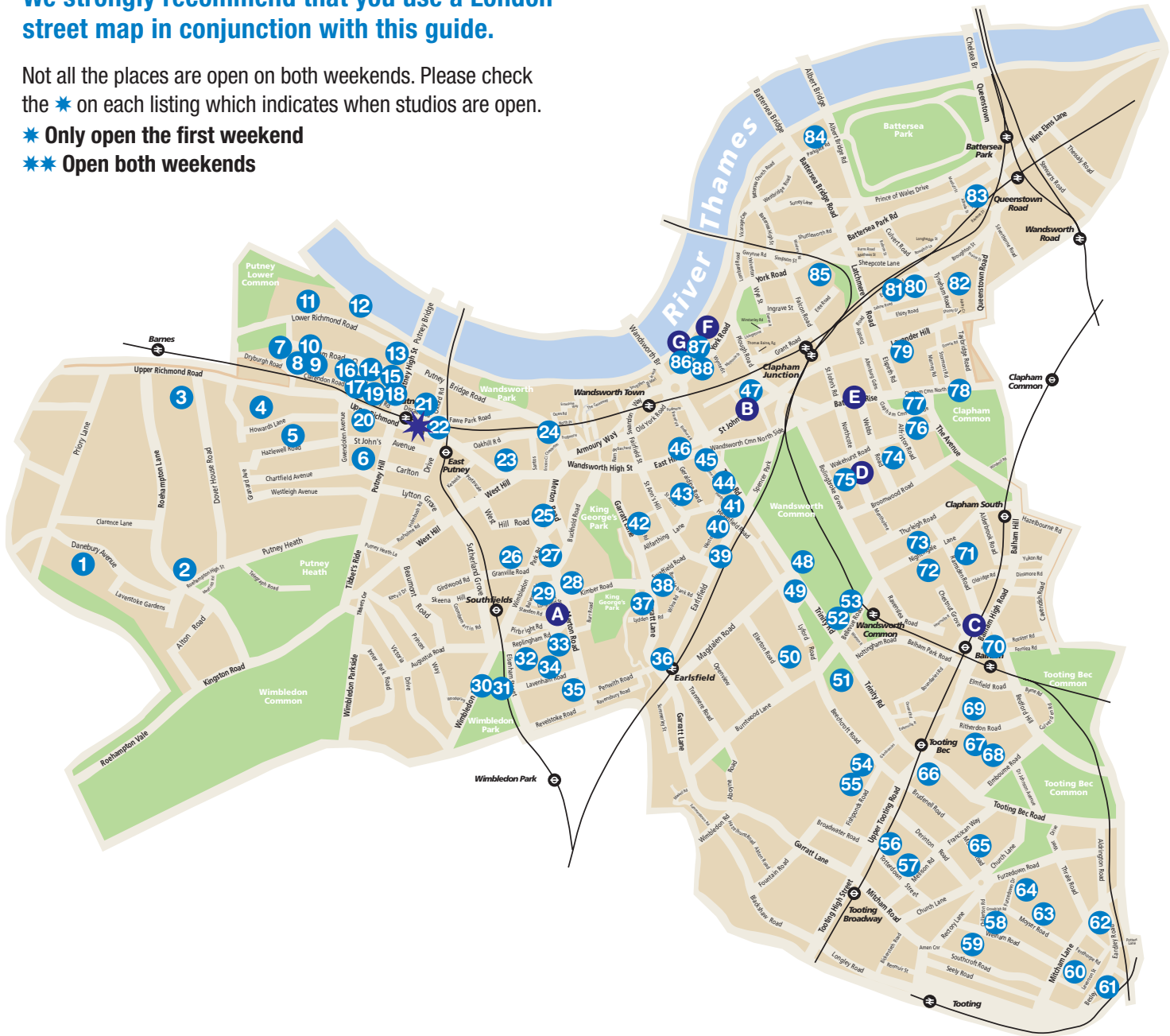
www.wandsworth.gov.uk/psad
(020) 8788 9145

We strongly recommend that you use a London street map in conjunction with this guide.

Not all the places are open on both weekends. Please check the  on each listing which indicates when studios are open.

 Only open the first weekend

 Open both weekends



Wandsworth Council strives to ensure that the information provided is correct at the time of going to print and cannot be held responsible for last minute changes to studios or the project.

Framers

Local businesses supporting this project and that may be useful to you.

Gallery 128	128 Kingston Road, SW19 1LY (020) 8540 6479
Gesso	Unit A233, Riverside Business Centre, Haldane Place, SW18 4UQ (020) 8870 8730
Great Expectations Framers	94 Eardley Road, SW16 6BJ (020) 8835 8354
La Galleria	298 Garratt Lane, SW18 4EH (020) 8874 9838
Lavender Framers	5 Barmouth Road, SW18 2DT (020) 8870 4432
Leonine Gallery	2 Disraeli Road, SW15 (020) 8785 4774
Southfields Framery	169 Replingham Road, SW18 5LY (020) 8870 8458
Swallow Frames Ltd	10 Queenstown Road, SW8 3RX (020) 7622 0104
Thames Galleries	143 Lower Richmond Road, SW15 1EZ (020) 8785 2972
The Wall Game	61 Broomwood Road, SW11 6HU (020) 7924 1728
Vegas	Unit F273, Riverside Business Centre, Haldane Place, SW18 4UQ (020) 8870 9400

We'd like to hear from you!



Free coffee and cake at Cake Boy (page 17) for the first twenty completed forms to come out of a hat on 31st October 2008.

- 1 On which of these days did you visit artists?**
 Saturday 27 Sunday 28
 Saturday 4 Sunday 5
- 2 How many open houses did you visit in total?** _____
- 3 How many of these have you never been to before?** _____
- 4 Do you live in Wandsworth?**
 Yes No
- 5 How did you hear about this event?**
 Through an artist taking part
 Through a friend
 Came across an event guide
 Saw an event poster
 Read about it in a newspaper or magazine
 Saw it on the council website
 Open Up, Cultural Olympiad publicity
- 6 How did you get hold of the event guide?**
 Picked it up at a café, a library or other outlet
 Received it in the post
 Downloaded it from the council website
- 7 Do you think the guide is easy to use?**
 Very easy Easy Okay
 Not very easy Not easy at all
- 8 Is there anything else you would like to tell us about your experience of visiting artists in Wandsworth? Did you enjoy it? Were you made to feel welcome? Did you buy any artworks?**

If I am a winner please contact me by phone or email at _____

To let us know

- send this form to the Arts Office, Town Hall, Wandsworth High Street, SW18 2PU
- Complete it online at www.wandsworth.gov.uk/arts
- Leave it at a studio

If you have difficulty understanding this in English, please contact:
Wandsworth Interpreting Service: (020) 8672 1043/3649

English

যদি আপনার এটি ইংরেজিতে বুঝতে অসুবিধা হয় তাহলে অনুগ্রহ করে এখানে যোগাযোগ
করুন: Wandsworth Interpreting Service: (020) 8672 1043/3649

Bengali

Si vous avez des difficultés à comprendre ce texte en anglais, veuillez
contacter: Wandsworth Interpreting Service: (020) 8672 1043/3649

French

અગર તે અંગ્રેજીમાં સમજવી મુશ્કેલ લાગે તો મહેરબાની કરીને
Wandsworth Interpreting Service: (020) 8672 1043/3649 પર સંપર્ક કરો.

Gujarati

यदि इसे अंग्रेजी में समझने में समस्या हो तो कृपया Wandsworth Interpreting Service
का (020) 8672 1043/3649 पर संपर्क करें।

Hindi

W razie problemów ze zrozumieniem tekstu w języku angielskim prosimy
o kontakt z: Wandsworth Interpreting Service: (020) 8672 1043/3649

Polish

Se tem dificuldades em compreender isto em Inglês, por favor,
contacte: Wandsworth Interpreting Service: (020) 8672 1043/3649

Portuguese

ਜੇ ਤੁਹਾਨੂੰ, ਇਸਨੂੰ ਅੰਗ੍ਰੇਜ਼ੀ ਵਿਚ ਸਮਝਣ ਵਿਚ ਮੁਸ਼ਕਿਲ ਹੈ, ਤਾਂ ਕਿਰਪਾ ਕਰਕੇ ਸੰਪਰਕ ਕਰੋ:
Wandsworth Interpreting Service: (020) 8672 1043/3649

Punjabi

Hadday kugu adag tahay inaad ku fahamto Ingriis fadlan la xiriir:
Wandsworth Interpreting Service: (020) 8672 1043/3649

Somali

Si tiene dificultad para entenderlo en inglés favor contactar a:
Wandsworth Interpreting Service: (020) 8672 1043/3649

Spanish

இதை ஆங்கிலத்தில் புரிந்துகொள்வதில் சிரமம் இருந்தால் நீங்கள் தொடர்புகொள்ள
வேண்டியது: Wandsworth Interpreting Service: (020) 8672 1043/3649

Tamil

Urdu

اگر آپ کو انگریزی میں اسے سمجھنے میں دشواری کا سامنا ہو تو براہ کرم رابطہ کریں:
Wandsworth Interpreting Service: (020) 8672 1043/3649

**To download copies of this guide
visit www.wandsworth.gov.uk/arts**

Media partners

SW

rise



INVESTOR IN PEOPLE

Designed and produced by the Corporate Communications Unit,
Wandsworth Borough Council. R.2016 (8.08)